

Cornell Cooperative Extension of Monroe County

Farm Transition Planning *Preserving Your Legacy*

Tuesday, November 19th, 8:30am - 12:30pm
Piano Works Mall, 349 West Commercial St.,
East Rochester, NY 14445

A workshop for agricultural business owners to learn about transitioning to the next generation

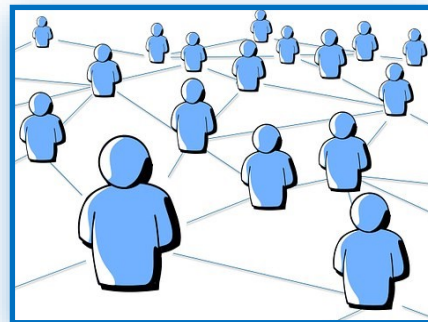
Professionals from MassMutual New York State and Farm Credit East will discuss tools & tactics for effective succession planning to help preserve your farm business and a hard-earned legacy:

- Goal development & timeline setting
- Document preparation and tax and legal considerations
- Family business meeting structure & communication
- Transition team development
- Plan implementation

Join us and learn the steps that are needed for successful farm transition planning in a multi-generation business. All members of each generation involved in agricultural business together are encouraged to participate.

Registration fee \$15 per farm — breakfast included!

Register [HERE](#)



MassMutual
New York State

Cornell Cooperative Extension
Monroe County

 **FARM CREDIT EAST**

"Cornell Cooperative Extension is an employer and educator recognized for valuing AA/EEO, Protected Veterans, and Individuals with Disabilities and provides equal program and employment opportunities"

"Securities and investment advisory services offered through qualified registered representatives of MML Investors Services, LLC. Member SIPC. Keystone Capital Partners Group is not a subsidiary or affiliate of MML Investors Services, LLC, or its affiliated companies. OSJ 700 Bausch & Lomb Place, Rochester NY 14604 (585) 262-5600"